



ALDO BOTTA

IL CLARINETTO: VOCALIZZI

ESERCIZI DI TECNICA GIORNALIERA

THE CLARINET: VOCALIZES

DAILY TECHNIQUE EXERCISES



ALDO BOTTA

IL CLARINETTO: VOCALIZZI

ESERCIZI DI TECNICA GIORNALIERA

THE CLARINET: VOCALIZES

DAILY TECHNIQUE EXERCISES





© 2022 Edizioni Musicali ACCADEMIA 2008

www.accademia2008.it

Il Clarinetto:

Vocalizzi

Esercizi di tecnica giornaliera

Stampato in Giugno 2022

Grafica copertina Stefania Botta

ISBN 979 12 59 832 59 7

Tutti i diritti sono riservati ed è vietata la
riproduzione anche parziale dei testi

Ed. Musicali Accademia2008

Via Arno 16, 67057 Pescina(AQ)

Tel 328 4854736

Webmail: info@accademia2008.it

Website: www.accademia2008.it

ALDO BOTTA

IL CLARINETTO: VOCALIZZI THE CLARINET: VOCALIZES

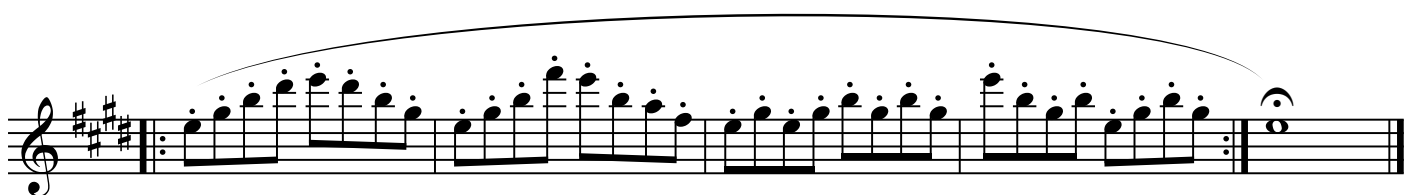
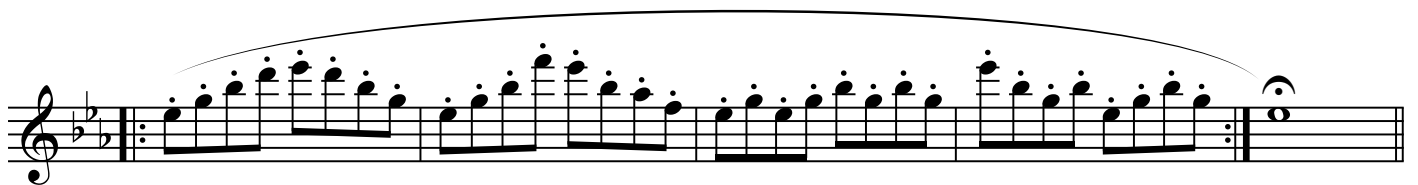
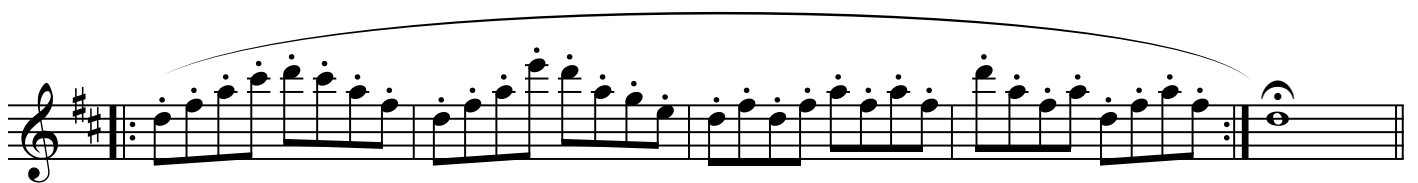
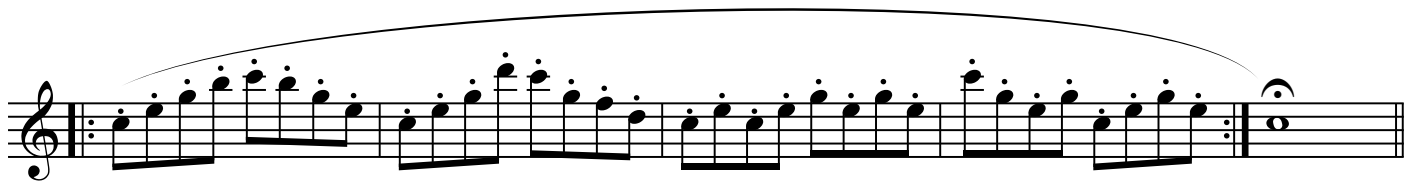
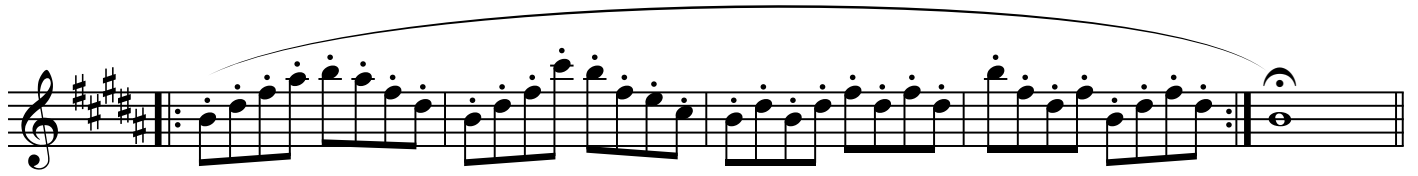
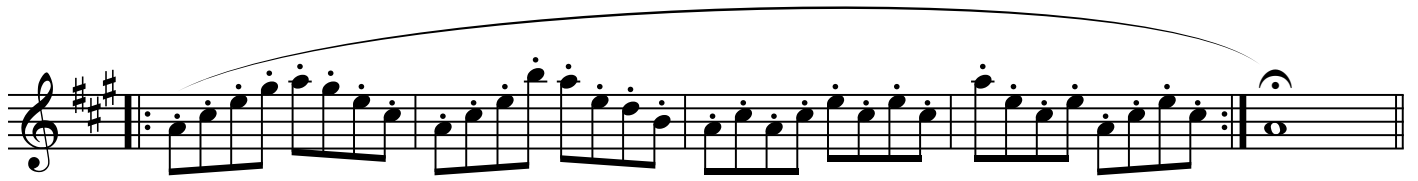
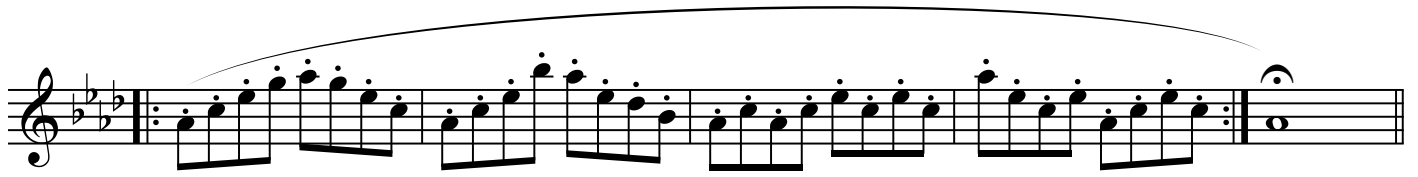
Esercizi di Tecnica Giornaliera

Daily Technique Exercises

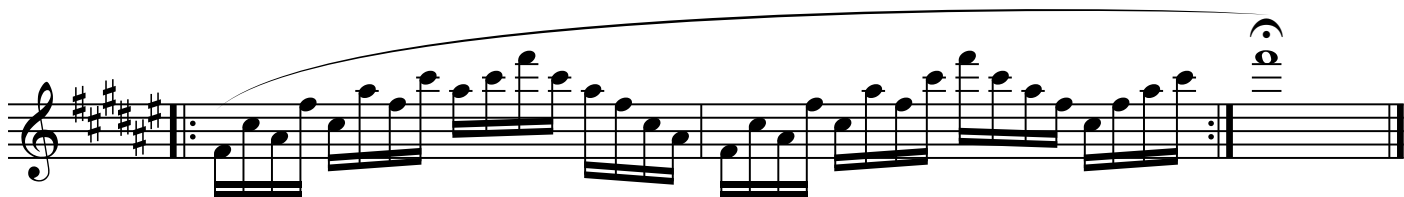
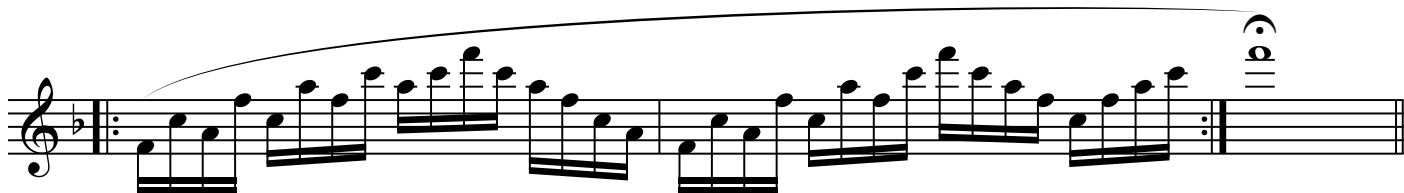
Esercizio 1

Maggiore

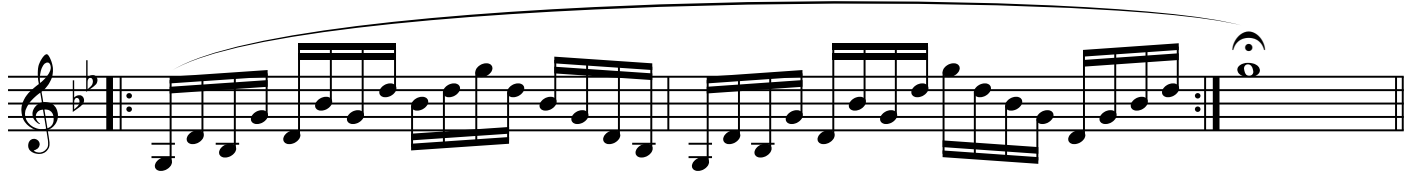
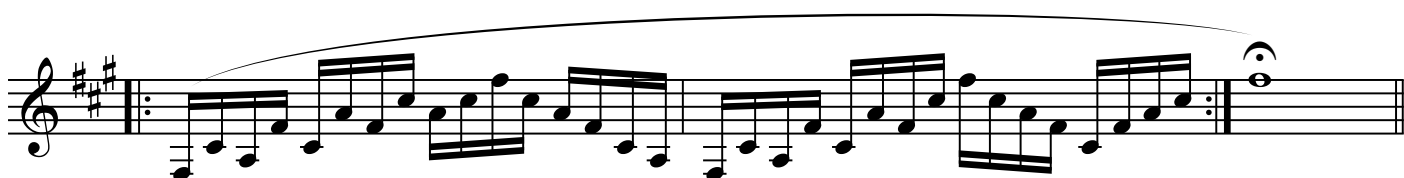
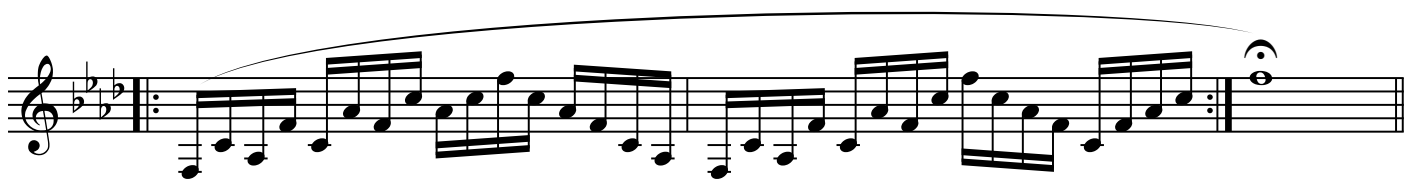
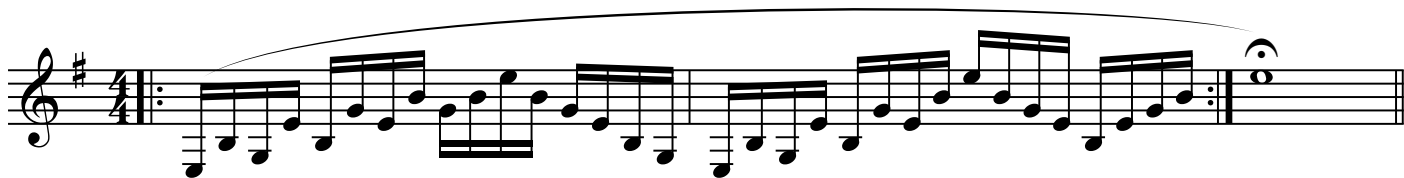
The image displays seven staves of musical notation for Exercise 1 in Major. Each staff begins with a treble clef and a 4/4 time signature. The key signatures vary across the staves: the first three are in A major (three sharps), the fourth is in C major (no sharps or flats), the fifth is in F major (one flat), the sixth is in D major (two sharps), and the seventh is in Bb major (two flats). Each staff contains a single melodic line with a long slur over the entire phrase, indicating a continuous breath or articulation. The notes are primarily quarter and eighth notes, with some beamed eighth notes. The exercise concludes with a double bar line and a repeat sign.



The image displays a page of musical notation consisting of 12 staves, organized into three systems of four staves each. The notation is written in treble clef and includes various rhythmic values, phrasing slurs, and articulation marks. The key signature changes across the systems: the first system is in B-flat major (two flats), the second system is in D major (two sharps), and the third system is in B-flat major (two flats). The music features a mix of eighth and sixteenth notes, often beamed together, and includes dynamic markings such as accents and slurs. The overall structure suggests a complex melodic exercise or a short piece of music.



Minore



First musical staff, treble clef, key signature of one flat (B-flat), starting with a whole note chord of B-flat and D. The staff contains a series of eighth notes with stems pointing up, followed by a quarter note chord of B-flat and D.

Second musical staff, treble clef, key signature of one flat, continuing the eighth-note sequence with stems pointing up.

Third musical staff, treble clef, key signature of three sharps (F#, C#, G#), starting with a whole note chord of F# and C#. The staff contains eighth notes with stems pointing up, including two notes marked with an 'x'.

Fourth musical staff, treble clef, key signature of three sharps, continuing the eighth-note sequence with stems pointing up, including notes marked with an 'x'.

Fifth musical staff, treble clef, key signature of one sharp (F#), starting with a whole note chord of F# and C#. The staff contains eighth notes with stems pointing up.

Sixth musical staff, treble clef, key signature of one sharp, continuing the eighth-note sequence with stems pointing up.

Seventh musical staff, treble clef, key signature of three flats (B-flat, E-flat, A-flat), starting with a whole note chord of B-flat and E-flat. The staff contains eighth notes with stems pointing up.

Eighth musical staff, treble clef, key signature of three flats, continuing the eighth-note sequence with stems pointing up.

Ninth musical staff, treble clef, key signature of three sharps, starting with a whole note chord of F# and C#. The staff contains eighth notes with stems pointing up.

Tenth musical staff, treble clef, key signature of three sharps, continuing the eighth-note sequence with stems pointing up.

